



8 April 2026
Kelly Connors, pm JCD, PhD

Sponsorship

Canonical Responsibilities for the Apostolic Works of
Religious Institutes


1



Operative Definition of Sponsorship

- ▶ Sponsorship of an apostolate or ministry is a formal relationship between a recognized Catholic organization and a legally formed entity, entered into for the sake of promoting and sustaining the Church's mission in the world.


2



Definition expanded

- ▶ APOSTOLATE or MINISTRY indicates a corporate work, as distinguished from the work of individuals;
- ▶ FORMAL RELATIONSHIP – one that is guaranteed by both canon and civil law
- ▶ RECOGNIZED – approved by either the diocesan bishop or the Holy See;
- ▶ ORGANIZATION – a religious institute, a group of institutes acting as co-sponsors, a diocese, a public juridic person, or any other canonical entity (such as an association of the faithful);
- ▶ CHURCH'S MISSION IN THE WORLD – various activities carried out by the Catholic Church in furtherance of the mission entrusted to it by its founder.

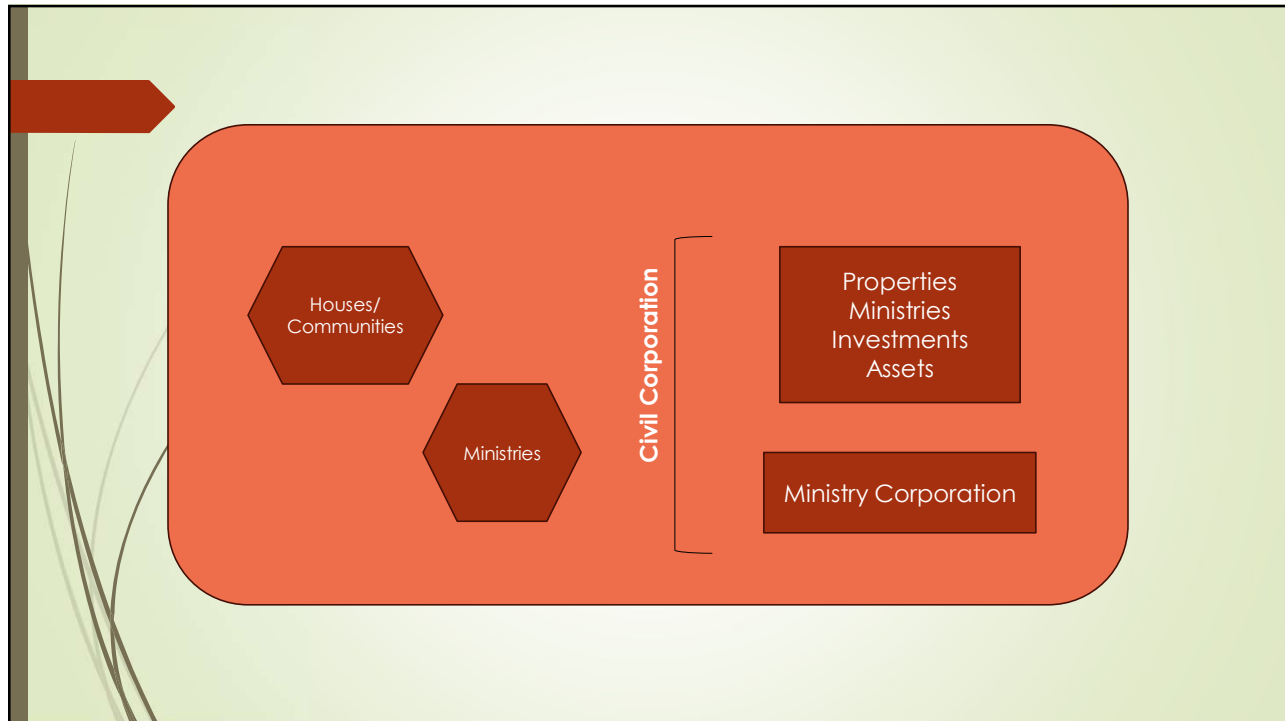
3



Relationship with Apostolate or Ministry

- ▶ A ministerial work that is part of a juridic person
 - ▶ a religious institute establishes a hospital or school in which the members minister and the institute's governance oversees the administration directly or through a corporate board that reports to them

4

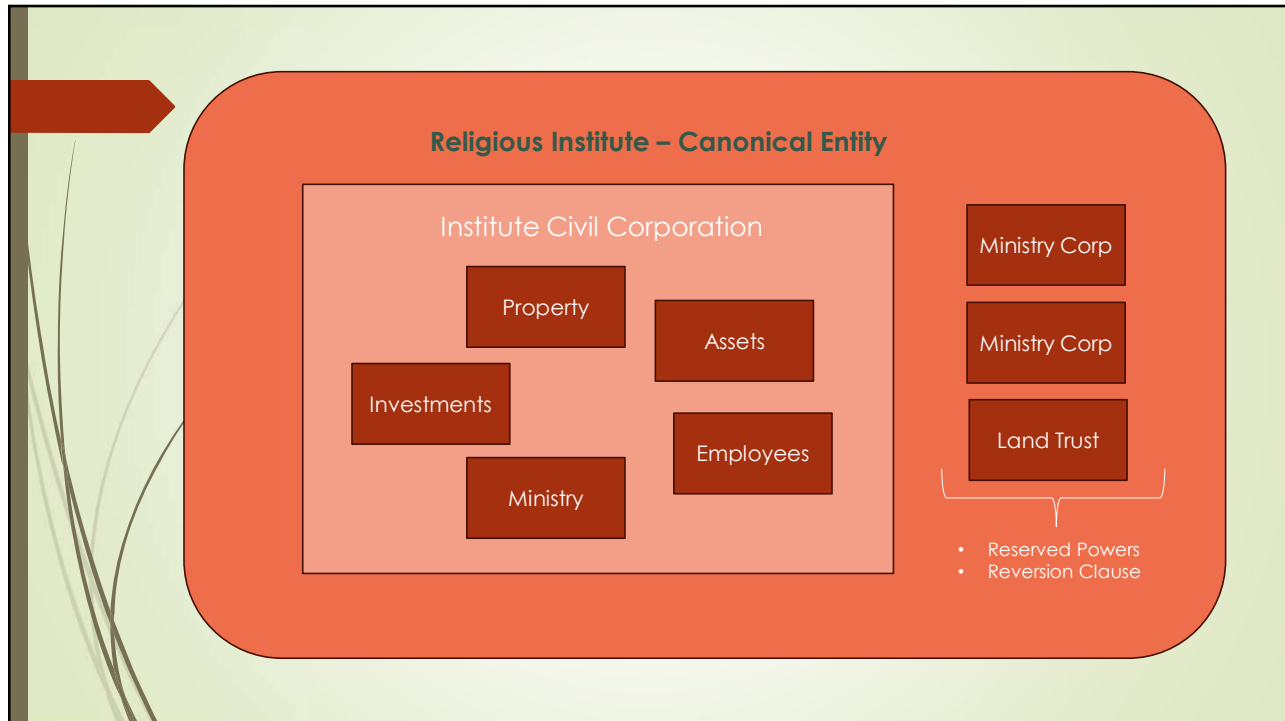


5

Relationship with Apostolate or Ministry

- ▶ A juridic person that is a subset of another juridic person
 - ▶ a religious institute establishes a hospital or school as a separate juridic person which is still part of the patrimony of the institute even if it is civilly incorporated; the governance (major superior and council) or its delegate serve as the Members of the board of the work

6

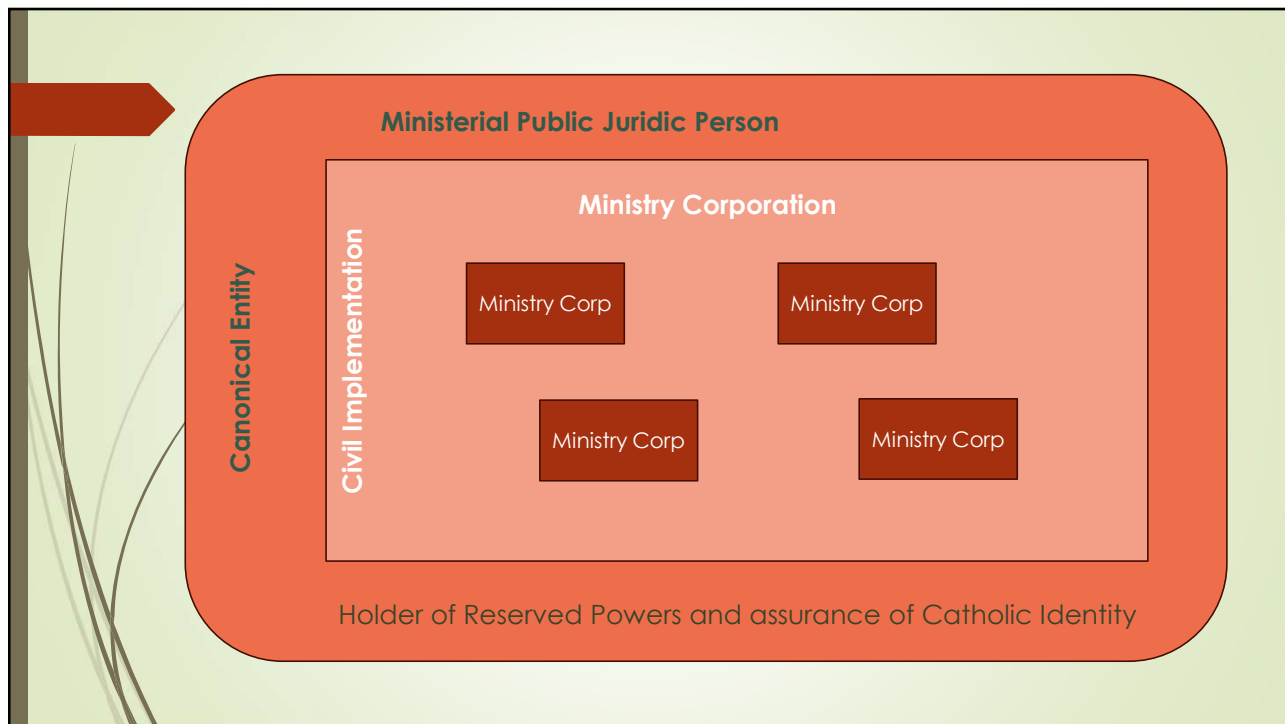


7

Relationship with Apostolate or Ministry

- A juridic person is alienated from the founding juridic person but a "sponsorship" relationship is continued by means of a mission effectiveness role; the new entity is recognized by ecclesiastical authority as a private or public juridic person
- a religious institute establishes a hospital or school and after some time decides to alienate the work to allow it to be totally separate from the institute with its own means of governing and having Catholic identity; it is no longer part of the corporate patrimony of the religious institute; the institute continues to have a spiritual or mission relationship with the work without having immediate control


8



9

- ### Influence vs. Control
- Sponsorship as different from Governance
 - Mission and its quality
 - Mission and Ministry of the Church
 - Teach
 - Sanctify
 - Govern
 - Accountability to Church Authority
 - Vigilance


10



Charism and Catholic Identity

- ▶ Expression of the charism of the founding religious institute
- ▶ Explicit expression of the institution's Catholic identity
 - ▶ In a co-sponsored arrangement, which is of a higher priority?
 - ▶ The individual charism
 - ▶ Catholic identity and mission of the Church


11



ESSENTIAL ROLE

FORMATION OF LEADERSHIP

12



FIDELITY: Faithfulness to the healing mission of Jesus, to the spirit and teachings of the Gospel, and to the teachings of the church

► Evidenced by:

- Demonstrable commitment to and advocacy for persons who are poor and underserved
- Faithfulness to the social, medical-moral, and pastoral teachings of the church
- Compliance with civil and canonical requirements
- Creative fidelity through theological reflection on the signs of the times and the appropriate responses

13



Integrity: Demonstrated integration of mission and core values by all persons and the appropriate activities of the organization

► Evidenced by:

- Commitment to processes and practices to ensure permeation of mission and core values: mission orientation, education, accountability, and assessment (both individual and institutional)
- Attention to the selection, development, and formation of current and future leaders for all roles within the ministry: sponsorship, governance, management, and delivery roles
- Systematic utilization of mission discernment processes in corporate decision making


14



Community: Communion of persons committed to a common mission and ministry

- Evidenced by:
 - Collaboration between and among organizations with common values working for the good of the communities served, such as parishes, schools, and social service agencies
 - Commitment to nurturing workplace spirituality
 - Development of skills in dialogue, listening, and theological reflection
 - Respect for and advancement of diversity within the workplace

15



Stewardship: Respect for, protection, enhancement, and sharing of all the resources used in the ministry for the common good

- Evidenced by:
 - Recognition and enhancement of all resources, including heritage, tradition, and reputation of a sponsor; scarce and valued human resources; and environmental as well as financial resources
 - Promotion of the common good
 - Respect for the integral connection with the earth
 - Actions and decisions that ensure the future viability and vitality of the ministry

16



17