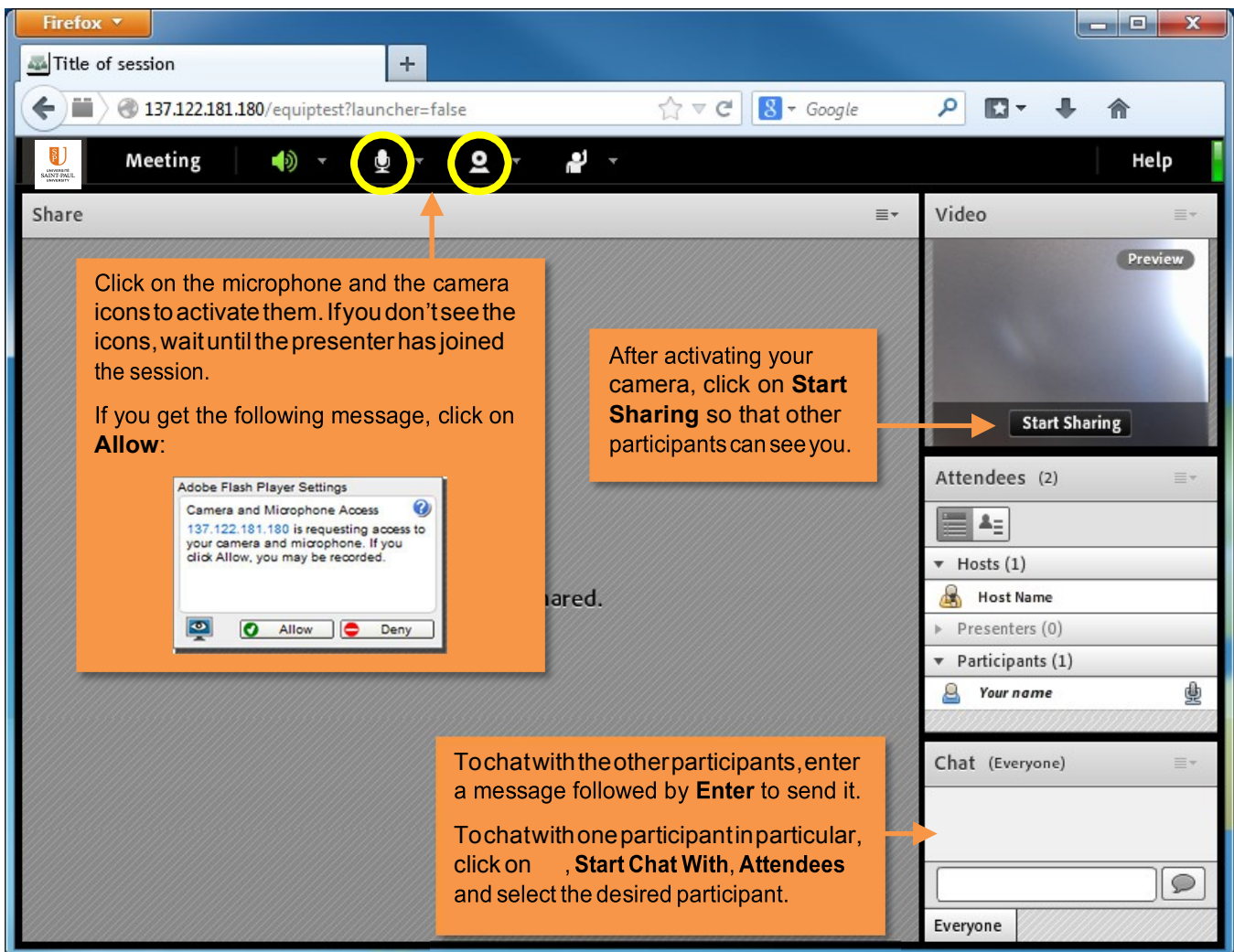
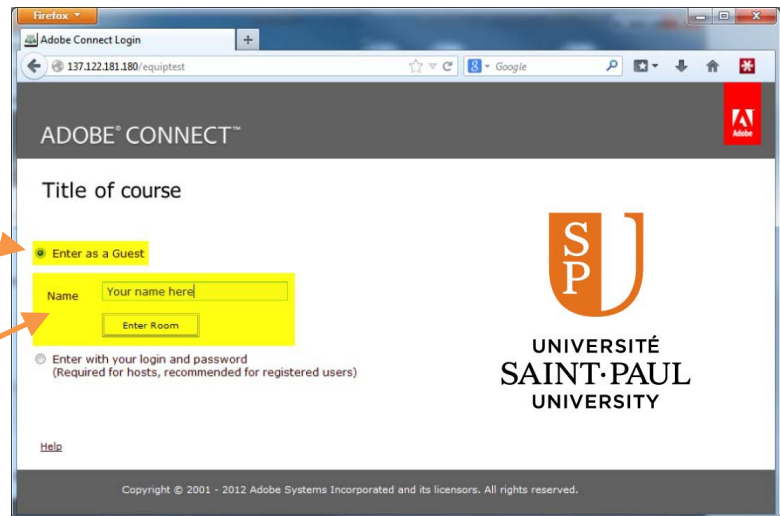



Select **Enter as a Guest**

Enter your name and click on **Enter Room.**



 = Microphone is active: All participants can hear you. Click to mute.

 = Microphone is muted: No one can hear you. Click to reactivate.

If you

ask a question or say something).

microphone or your camera

Click on the screen and select **Settings...**

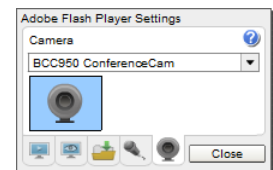
Give Adobe Flash Player permission to use your camera and microphone.



Select the desired microphone from the drop-down list and check the "Reduce Echo" option. You can also adjust the volume here.



Select the desired camera in the drop down-list.



Note : In certain cases, after making modifications in the settings, it is necessary to close the Adobe Connect session and restart it.

You may use the **Adobe Connect Diagnostic Test** to test your connection:

[https://admin.acrobat.com/common/help/en/support/meeting\\_test.htm](https://admin.acrobat.com/common/help/en/support/meeting_test.htm)

Note : The Adobe Connect Add-in is required.

## Notes regarding your computer configuration

- Use the most recent version of an Internet browser. Eg. Microsoft Internet Explorer 8, 9, 10, 11; Mozilla Firefox; Apple Safari.
- Adobe® Flash® Player 11.2 or more recent
- Apple devices (iOS 6 or more recent) – Install the Adobe Connect app available in the App Store.
- Samsung Galaxy Tab 2 10.1, Samsung Galaxy S3 & S4, Motorola DROID RAZR MAXX, Motorola Atrix, Motorola Xoom, Nexus 7 tablet
- Android OS 2.3.4 or more recent

For help or more information, contact the Computer and Distance Education Services at (613) 236-1393 extension 2234, or send an online help request to: [http://ustpaul.ca/en/help-request-form\\_769\\_123.htm](http://ustpaul.ca/en/help-request-form_769_123.htm)

A banner for the Service de l'informatique et de l'enseignement à distance (SIED - CDES) at Université Saint-Paul. On the left is the university's logo, a shield with 'SP' and 'U'. The text 'UNIVERSITÉ SAINT-PAUL UNIVERSITY' is below it. In the center, 'SIED - CDES' is written in large, bold, white letters. Below that, in smaller white text, is 'Service de l'informatique et de l'enseignement à distance' and 'Computer and Distance Education Services'. On the right, there are images of a laptop, a tablet, and a smartphone, all displaying blue screens.